



*Essential Validation Services*



**Nature's** FUSIONS  
ESSENTIAL OILS



**Sample:**

---

Client: | Nature's Fusions  
Sample: | Vertigo (Nausea / Equilibrium)  
Batch # | NF-NF.VERT-18-A  
CAS Number |  
Type: | Blend

---

**Conclusion:**

- No adulterants, diluents, or contaminants were detected via this method.
- This oil meets the expected profile for genuine oil of Vertigo (Nausea / Equilibrium).

X 

---

Validated By:



Essential Validation Services

747 SW 2nd Ave, Gainesville, FL 32601

Phone: 317-361-5044 E-mail: Adam@essentialvalidationservices.com

**Summary of Analyses**

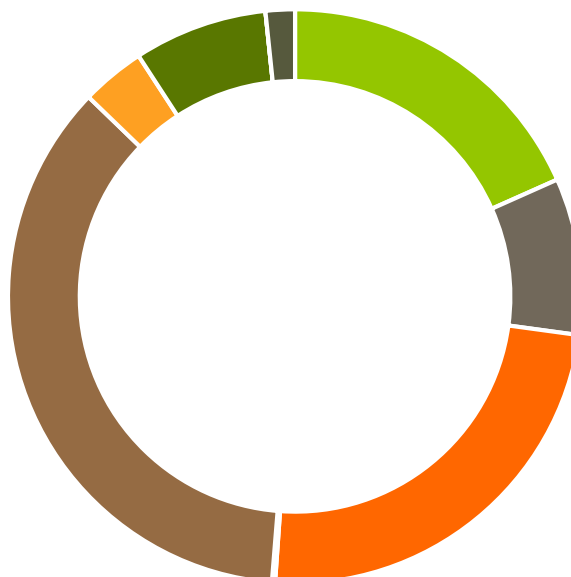
---

A fresh sample of Vertigo (Nausea / Equilibrium) (10 uL in .5to.5 mL Hexane + ETOH) was prepared and analyzed via split injection GC/EI-MS.



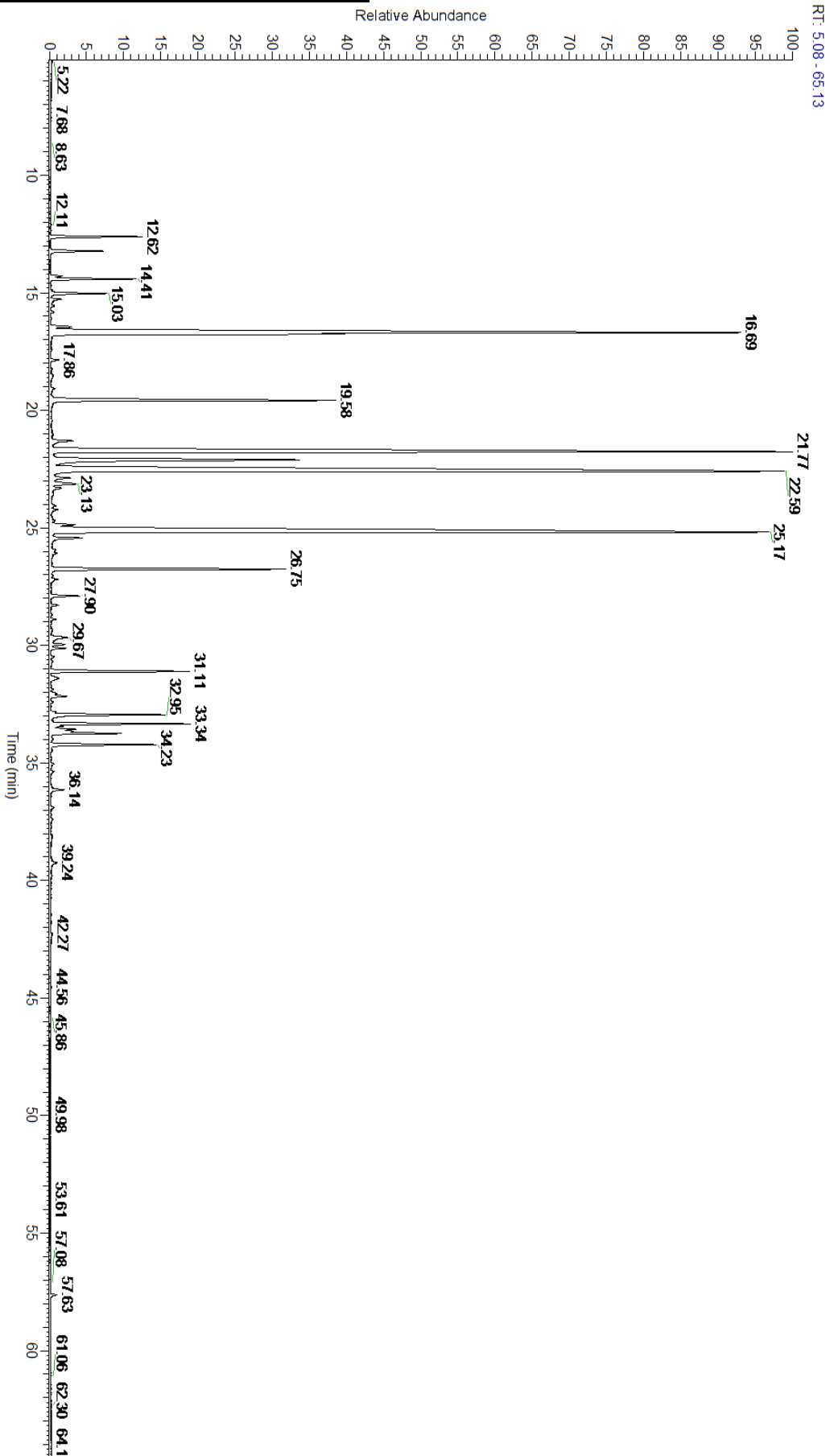
Main Compounds	Percentages
Carvone	19.27%
Menthol	18.94%
Menthone	15.65%
Limonene	13.87%
Menthofuran (Co-Eluting)	4.93%
Linalool	4.45%
Menthyl acetate	3.22%
1,8-Cineole	2.54%
beta-Caryophyllene	1.94%
alpha-Zingiberene	1.73%
ar-Curcumene	1.59%
beta-Sesquiphellandrene	1.37%
alpha-Pinene	1.13%

Monoterpenes	Sesquiterpenes	Monoterpenols	Sesquiterpenols	Ketones
18.33%	8.83%	23.95%	0.18%	35.93%
Esters	Ethers	Aldehydes	Phenols	Other
3.60%	7.53%	0.00%	0.00%	1.65%



- Monoterpenes
- Sesquiterpenes
- Monoterpenols
- Sesquiterpenols
- Ketones
- Esters
- Ethers
- Phenols
- Other

ESSENTIAL VALIDATION SERVICES | 747 SW 2<sup>ND</sup> AVE GAINESVILLE, FLORIDA 32601 | 317-361-5044





Total Percentage		98.49%			
Peak Number	RT	Area %	Compound Name	RI	Chemical Family
1	12.62	1.13%	alpha-Pinene	936.10	Monoterpene
2	13.23	0.70%	Camphene	950.30	Monoterpene
3	14.29	0.14%	Sabinene	973.00	Monoterpene
4	14.41	1.08%	beta-Pinene	974.00	Monoterpene
5	15.03	0.70%	Myrcene	989.20	Monoterpene
6	15.28	0.14%	3-Octanol	992.00	Aliphatic Alcohol
7	16.46	0.31%	para-Cymene	1024.30	Monoterpene
8	16.69	13.87%	Limonene	1029.50	Monoterpene
9	16.76	2.54%	1,8-Cineole	1031.80	Monoterpene Ether
10	17.86	0.10%	gamma-Terpinene	1054.00	Monoterpene
11	18.51	0.03%	cis-Linalool oxide	1075.10	Monoterpenol
12	19.58	4.45%	Linalool	1099.00	Monoterpenol
13	21.30	0.33%	Camphor	1147.55	Monoterpene Ketone
14	21.77	15.65%	Menthone	1155.00	Monoterpene Ketone
15	22.10	4.93%	Menthofuran	1164.00	Monoterpene Ether
16	22.11	Co-Eluting	Isomenthone	1164.33	Monoterpene Ketone
17	22.11	Co-Eluting	Neomenthol	1165.00	Monoterpenol
18	22.59	18.94%	Menthol	1177.40	Monoterpenol
19	22.87	0.21%	Terpinen-4-ol	1180.57	Monoterpenol
20	23.13	0.24%	alpha-Terpineol	1191.71	Monoterpenol
21	23.14	0.08%	neo-dihydrocarveol	1201.00	Monoterpenol
22	24.06	0.06%	beta-Cyclocitral	1221.00	Monoterpene
23	24.86	0.30%	Pulegone	1244.43	Monoterpene Ketone
24	25.17	19.27%	Carvone	1248.14	Monoterpene Ketone
25	25.44	0.38%	Piperitone	1258.50	Monoterpene Ketone
26	26.75	3.22%	Menthyl acetate	1297.00	Monoterpene Ester
27	27.19	0.09%	neo-dihydro carveol acetate		
28	28.89	0.06%	alpha-Terpinyl acetate	1353.00	Monoterpene Ether
29	29.67	0.38%	Geranyl acetate	1379.20	Monoterpene Ester
30	29.95	0.19%	beta-Bourbonene	1388.70	Sesquiterpene
31	30.12	0.19%	beta-Elemene	1389.20	Sesquiterpene
32	30.49	0.04%	Isocaryophyllene	1403.65	Sesquiterpene
33	31.11	1.94%	beta-Caryophyllene	1427.14	Sesquiterpene
34	31.38	0.17%	beta-Cedrene	1428.00	Sesquiterpene
35	32.04	0.08%	beta-Gurjunene	1433.00	Sesquiterpene
36	32.17	0.24%	alpha-Humulene	1461.43	Sesquiterpene
37	32.95	1.59%	ar-Curcumene	1480.50	Sesquiterpene
38	33.34	1.73%	alpha-Zingiberene	1491.75	Sesquiterpene
39	33.57	0.38%	Germacrene D	1484.71	Sesquiterpene
40	33.66	0.24%	1-epi-Bicyclosesquiphellandrene	1489.25	Monoterpene
41	33.75	0.91%	beta-Bisabolene	1509.86	Sesquiterpene
42	34.23	1.37%	beta-Sesquiphellandrene	1524.57	Sesquiterpene
43	36.14	0.18%	(E)-Nerolidol	1567.00	Sesquiterpenol